



EDCTP

Affiliated Research Centre (ARC)

Capacity Building Through IDEA Fellowship Programme in Eastern Uganda: Efforts Towards Affiliated Research Centre



Figure 1: MCRI Building where the ARC will be hosted in Eastern Uganda

Mbale Clinical Research Institute (MCRI) in Eastern Uganda has a distinguished record of conducting impactful research in collaboration with local and international partners. Through the IDEA Fellowship Programme, one of the deliverables is the establishment of an Affiliated Research Centre (ARC) that will provide a platform for further training in emerging and re-emerging infectious diseases. In preparation for the ARC establishment, the IDEA Fellowship Programme has contacted The Open University in UK for a possible affiliation. Besides the application, the Ugandan Team lead that included

Professor Peter Olupot-Olupot, Professor Paul Waako and Dr George Paasi have visited the Open University to follow up

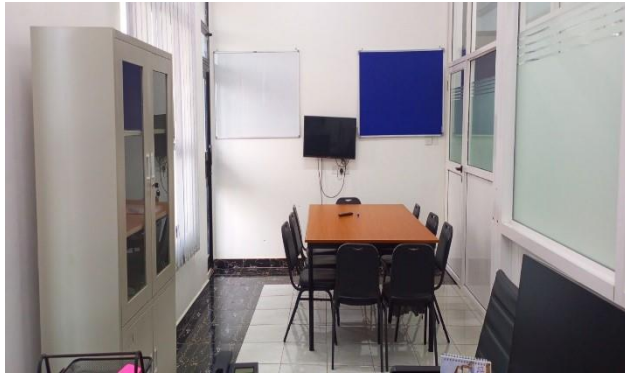


Figure 3: Mini Meeting space

Our research programs focus on emerging and re-emerging infectious diseases covering epidemiology, pathophysiology and intervention studies. These are aligning with the local health priorities and contributing to the global research agenda and improvement on sustainable development goals (SDGs).

MCRI ensures that adherence to ethical standards is paramount for every research undertaken at the institute. Within the MCRI collaborators, there are two Research Review Committees (REC) that oversee and approve all research involving human subjects undertaken at MCRI. These are Mbale Regional Referral Hospital REC and Busitema University Faculty of Health Sciences REC. This ensures that our research has the highest ethical standards. The establishment of this ARC is expected to yield the following outcomes: Train a critical mass of scientists to advance scientific knowledge.

- Strengthening local research capacity.
- Improved health outcomes through evidence-based interventions that come from research conducted at MCRI.

on the discussions



Figure 2: One of the training facilities for IDEA Fellows

feasibility of establishment of an ARC in Eastern Uganda. The overarching aim of the establishment of this ARC

is to improve capacity building through training of scientists at PhD level to boost the much-needed skilled work force to tackle the important health conditions in the region and country at large. In addition, this establishment will foster further collaborations with the national and international research institutions.

MCRI has over overtime built facilities; including teaching and seminar space. Laboratories and equipment. In addition, the institute is networking with experienced researchers some of whom are part the co-investigators on the IDEA Fellowship Programme. To further develop the ARC, MCRI is committed to fostering further collaborations with other training institutions and pharmaceutical industries to leverage expertise and resources for impactful training and research outcomes

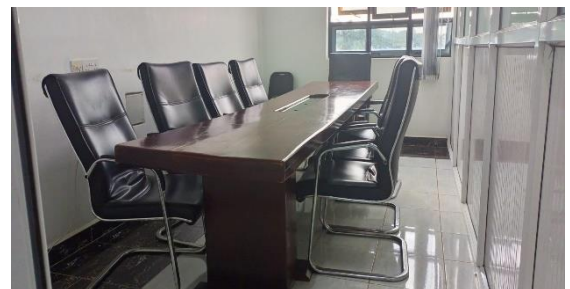


Figure 4: Conference Room for meetings

We believe that the establishment of an ARC at Mbale Clinical Research Institute will significantly contribute to the research landscape in Eastern Uganda and beyond. We are excited about the prospect of collaboration and the positive impact this initiative can have on health research and outcomes in the region. MCRI would like to express gratitude and thanks to EDCTP and all collaborating institutions for the support.



Affiliated Research Centre (ARC)

Capacity Building Through IDEA Fellowship Programme in Eastern Uganda: Efforts Towards Affiliated Research Centre

Below is a simple Road map to the ARC

1. At the ground floor, we have directions to level 2 where we have a conference room and a training room for the IDEA Fellows



Figure 6: Stair case to Training and Conference Room



Figure 5: Training Room for Epi Fellows

2. At level two, we have the above facilities as seen in the signage.



Figure 7: Signage for Training and Conference Rooms



Affiliated Research Centre (ARC)

Capacity Building Through IDEA Fellowship Programme in Eastern Uganda: Efforts Towards Affiliated Research Centre

3. At level three, we have the Clinical Trials Unit (CTU) as seen in the Images below.



Figure 8: Stair Case to CTU



Figure 9: Clinical Trials Unit